

Biotinylated Cynomolgus ALPP Protein; His-Avi Tag

Product Information

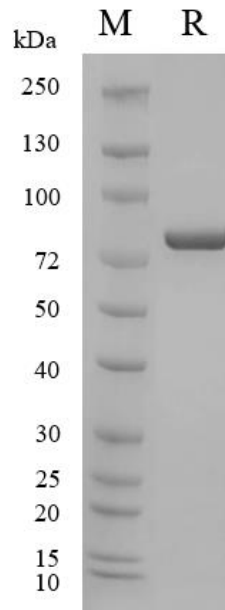
Product Name	Biotinylated Cynomolgus ALPP Protein; His-Avi Tag
Storage temp.	Store at $\leq -70^{\circ}\text{C}$, stable for 6 months after receipt. Recommend to aliquot the protein into smaller quantities for optimal storage. Please minimize freeze-thaw cycles.
Catalog# / Size	GM-85160RP-25 / 25 μg GM-85160RP-200 / 200 μg

Protein Information

Alternative Names	PLAP
Source	Biotinylated Cynomolgus ALPP Protein; His-Avi Tag (GM-85160RP) is expressed from human 293 cells (HEK-293). It contains AA Ile21 - Asn504 (Accession # XP_045223825.1). This protein carries a His-Avi tag at the C-terminus.
Purity	> 95% as determined by SDS-PAGE
Endotoxin	< 1 EU/ μg , determined by LAL gel clotting assay
Predicted Mol Mass	57.4 KDa
Formulation	Supplied as a 0.2 μm filtered solution of PBS, pH7.4.
Description	PLAP is the abbreviation for Placental alkaline phosphatase, which is an enzyme protein. PLAP is highly expressed in placental tissue, hence its name. The human placental ALP (PLAP) gene was identified on chromosome 2 and possesses 87% similarity with IAP gene. Interestingly, cancer cells can re-express PLAP gene as Regan isoenzyme. In contrast to the other ALP isoenzymes, PLAP is a polymorphic enzyme with up to 18 allelozymes originating from point mutations. As a result of the low catalytic activity in comparison with the other isoenzymes, PLAP is considered to be inefficient due to the neutral pH of placenta. Furthermore, the structure of PLAP consists of two disulfide bridges: the first one stabilises the PLAP orientation, which is situated near the anchor of the Asp481 Glycosylphosphatidylinositol (GPI) and the second stiffens the anchor of the carbohydrate chain and is situated close the first part of the glycosylation.

Version:3.3 Revision Date:25/12/2023

SDS-PAGE

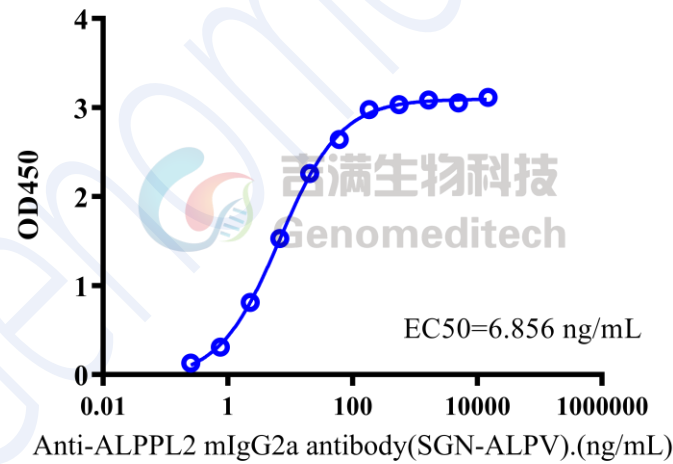


On SDS-PAGE under reducing (R) condition. The gel was stained overnight with Coomassie Blue. The purity of the protein is greater than 95%.

Bioactivity-ELISA

Bioactivity-ELISA

0.1 μ g Biotinylated Cynomolgus ALPP Protein; His-Avi Tag of per well



Biotinylated Cynomolgus ALPP Protein; His-Avi Tag (Catalog # GM-85160RP) was immobilized at 1 μ g/ml (100 μ L/well) on streptavidin precoated. Increasing concentrations of Anti-ALPPL2 mIgG2a antibody (SGN-ALPV) (Catalog # GM-58773AB) were added.